

©2020 BabylissPro

Distributed by:

Dateline Imports P/L
Professional Products Division
Banksmeadow, NSW 2019
Australia

Ph: 61 2 9666 3611

www.babylisspro.com.au

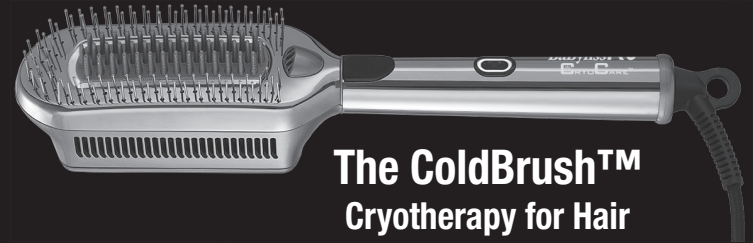
Dateline Imports NZ Ltd
66 Apollo Drive
Albany, Auckland
NZ 0632

Ph: 64 9 415 5415

www.babylisspro.co.nz

BaBylissPRO

CRYOCARE™



The ColdBrush™
Cryotherapy for Hair

Model BNTCB1A

For your safety and continued enjoyment of this product,
always read the instruction book carefully before using.

PROFESSIONAL COLDBRUSH IMPORTANT SAFETY INSTRUCTIONS

When using electrical appliances, especially when children are present, basic safety precautions are required to always be followed, including the following:

READ ALL INSTRUCTIONS BEFORE USING KEEP AWAY FROM WATER

SAFETY CAUTIONS

- This appliance is not intended for use by persons (including children) with reduced physical, sensory or mental capabilities, or lack of experience and knowledge, unless they have been given supervision or instruction concerning use of the appliance by a person responsible for their safety.
- Children should be supervised to ensure that they do not play with the appliance.
- Do not immerse into water or other liquids. Do not use near basins or other vessels containing water.
- Do not immerse the appliance in water or other liquids.
- Do not reach for an appliance that has fallen into water. Unplug immediately.
- Do not play with the appliance, it is not a toy.
- When storing the unit make sure it is unplugged and do not wind the supply cord around the appliance.
- This appliance should not be used on, by or near children or individuals with certain disabilities.
- Store out of children's reach.
- **Do not use the appliance if the cord is damaged. In the event of damage discontinue use immediately. If the supply cord is damaged, it must be replaced by manufacturer or its**



- **service agent or similarly qualified persons in order to avoid a hazard.**
- Return the appliance to the nearest service facility for examination, electrical or mechanical adjustment or repair.
- Do not use the appliance if it has been dropped or if it shows noticeable damage.
- Do not leave unattended when switched on.
- Do not use any attachments other than those recommended by BabylissPRO.

Keep the appliance dry

OPERATING INSTRUCTIONS

This appliance is not intended for use along with another electrical appliance, operating at the same time. This appliance is intended for professional use. The appliance is designed to operate at 100-240V AC 50-60Hz 40W. It will automatically adjust to the correct voltage.

TO TURN ON:

- Press the on/off button centered on The ColdBrush™ handle.
- A blue LED light around the on/off button and the cold plate will illuminate. You will quietly hear the two brushless motors.
- You will notice the cold plate will become very cold.

TO TURN OFF:

- Press and hold the power button for 2-3 seconds to shut off The ColdBrush™.
- Both the power button and cold plate with no longer be lit, the motors will shut off, this means you've successfully powered down.
- There is a 30 minute auto shut off just in case!

FOR WET HAIR:

Once hair is towel dried, pass The ColdBrush™ through your hair as you would a regular brush (2-4 passes per

section). This will help detangle wet and make hair more manageable – less tension, less breakage. You'll be amazed at the quality and ease of each blowout.

FOR DRY HAIR:

After blow drying the hair, pass The ColdBrush™ through as you would a regular brush (2-4 passes per section). As the cold plate passes over the hair shafts it will rehydrate, adding moisture back into each strand. The metal bristles help to align the hair resulting in smoother, shinier, healthy looking hair. Run your fingers through to feel the difference in weight and smoothness.

FOR DAY-TWO HAIR:

For hair that is not clean, pass The ColdBrush™ through your hair as you would a regular brush (2-4 passes per section), focusing on the roots where buildup usually forms. Allow the cold plates and bristles to break up oils and detangle. Hair feels lighter, cleaner and not weighed down.

THE SCIENCE:

Engineered with a Thermoelectric Cooler (TEC), The ColdBrush™ is based on the Peltier Effect. The TEC has two ceramic insulated plates with two types of semi-conductors (positive and negative) between the plates in parallel formation. When electricity flows through the module, heat transfers away through the bottom, while creating cold temperatures on the top.

TO TURN OFF:

- Brilliant Shine – Freezing temperatures on the cold plate effectively align individual hair strands. The results are luminous.
- Control Frizz – An advanced, high-output ion generator works in combination with cryotherapy to eliminate flyaways and smooth hair.

- Active Hydration –The transfer of moisture from the cold plate revitalizes, restores and protects the hair shaft.
- Enhanced Condition – Added shine, smoothness, and alignment. Hair is healthy-looking.
- Lasting Results – Use The ColdBrush™ daily. You'll see and feel the difference.

NOTICE

PLEASE ALWAYS TURN UNIT OFF AND UNPLUG WHEN NOT IN USE. FOR YOUR SAFETY, THERE IS A 30-MINUTE AUTO SHUT-OFF FEATURE.

USER MAINTENANCE

Your appliance is virtually maintenance free. No lubrication is needed. Keep all vents and openings clear of dirt and dust. If cleaning becomes necessary, disconnect the unit from the power source, allow it to cool and wipe exterior with a cloth. If any abnormal condition occurs, unplug the unit, allow it to cool, and return it for repair to an authorized service representative only. No repairs should be attempted by the consumer.

CAUTION

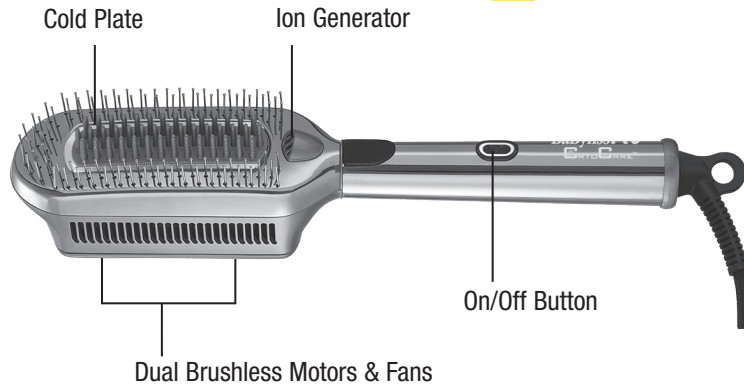
NEVER allow the power supply cord to be pulled or twisted. Never wrap the cord around the unit. Damage will occur at the high flex point of entry into the unit, causing it to rupture and short circuit. Inspect the cord frequently for damage. Stop use immediately if damage is visible or if unit stops or operates intermittently

STORAGE

When not in use, your appliance is easy to store. Allow unit to cool, then simply put back in the box and store out of reach of children in a safe, dry location. Do not jerk or strain cord at plug connections.

GET TO KNOW THE COLDBRUSH™

MODEL: BNTCB1A



THREE YEAR WARRANTY

The warranty may only be claimed where proof of original purchase is presented, i.e. original purchase receipt or invoice. We recommend attaching a copy of your purchase receipt to this instruction book and storing in a safe place.

To make a warranty claim you can return the defective product back to the place it was purchased where it will be replaced, exchanged or repaired (see point 12 in conditions).

Trade purchasers who have purchased from us directly should contact us directly with regard to warranty claims.

Please have the following details to hand:

1. Date of purchase
2. Details of where the product was purchased
3. Product Name/Model Number
4. Confirm you have your purchase receipt
5. Detail the problem with your product

It is important to retain your proof of purchase. We recommend attaching your receipt to this page.

For advice with regard to the warranty claim process please contact Customer Services:

Dateline Imports P/L Professional Products Division

Banksmeadow, NSW 2019
Australia
Ph: 61 2 9666 3611
www.babylisspro.com.au

Dateline Imports NZ Ltd

66 Apollo Drive
Albany, Auckland
NZ 0632
Ph: 64 9 415 5415
www.babylisspro.co.nz

WARRANTY AGAINST DEFECTS

A. AUSTRALIAN CONSUMER LAW

1. Our goods come with guarantees that cannot be excluded under the Australian Consumer Law. You are entitled to a replacement or refund for a major failure and compensation for any other reasonably foreseeable loss or damage. You are also entitled to have the goods repaired or replaced if the goods fail to be of acceptable quality and the failure does not amount to a major failure.
2. The guarantees under the Australian Consumer Law ("ACL") are provided in sections 51 to 59 inclusive of the ACL ("Statutory Guarantees") and the remedies are provided in sections 259 to 266 inclusive of the ACL ("Statutory Remedies").

In New Zealand our goods come with a guarantee that cannot be excluded under the Consumer Guarantee Act 1993.

B. BabylissPRO EXTENDED WARRANTY

1. In addition and subject to the Statutory Guarantees and Statutory Remedies, the following express warranty ("Warranty") commences from the date of purchase and continues for a period of 36 months ("Warranty Period") after which it expires. Subject to the conditions in Section C below, Dateline warrants to the original purchaser ("Purchaser") of the BabylissPRO product that is the subject of this warranty ("Product") that if during the Warranty Period, the Product suffers from any defect caused by faults in materials or workmanship, Dateline will a) replace the Product, or b) exchange defective part in the Product or c) repair the Product, as Dateline may choose in its discretion

(“Warranty”). In this Warranty “Dateline” means Dateline Imports P/L (ABN 60 000 557 282) of Banksmeadow, NSW 2019, Australia.

2. To honour the Warranty, Dateline must replace, or exchange parts in, or repair, the Product, as Dateline determines, in accordance with paragraph B1 above, subject always to the conditions in Section C below.
3. If any of the conditions in Section C below are inconsistent with any provisions of the ACL or regulations made there under, those provisions of the ACL or regulations shall prevail to the extent of the inconsistency.

C. CONDITIONS

1. The Product must be used in accordance with manufacturer’s instructions. This Warranty does not apply should the defect in or failure of the Product be attributable to misuse, abuse, accident, act of God such as lightning, or nonobservance of manufacturer’s instructions on the part of the user. This Warranty does not cover ordinary wear and tear in the Product or its parts.
2. Dateline does not accept liability for a) any loss or damage however suffered, caused by or arising out of any failure to use the Product in accordance with the manufacturer’s instructions, and b) any indirect, consequential or economic loss or damage however caused.
3. This Warranty is immediately void if – a) any serial number or appliance plate is removed or defaced, b) the Product has been serviced or otherwise repaired by a person not authorized to do so

by Dateline or where non approved replacement parts are used.

4. The Product must be connected to the electrical voltage supply as specified in the ratings label located on the Product. This Warranty does not cover defects arising from incorrect voltage supply.
5. This Warranty may only be claimed against where proof of original purchase is presented, for example, original receipt or invoice.
6. Any parts of the Product that need to be replaced, or if the whole Product needs to be replaced, the replaced Product, become the property of Dateline. The Warranty on any replacement Product or parts will expire on the same date that the Warranty Period on the original Product expires.
7. The benefits provided by this Warranty are in addition to all other rights and remedies in respect of the Product which the Purchaser has under the ACL, and applicable laws in New Zealand, which rights and remedies by law may not be excluded. All other warranties and representations express and implied are hereby excluded.
8. The defect must have occurred during the Warranty Period and Purchaser bears the onus of proving that fact, and that the defect was not caused by any of the causes excluded from this Warranty.
9. This Warranty does not cover Products purchased from any person who is not a retailer serviced by Dateline Imports P/L or purchased second hand.
10. The Purchaser is responsible for all postage and freight charges and any other expenses incidental to claiming against this Warranty.

11. The Warranty excludes consumable items (such as blades or brushes) and normal wear and tear.
12. If you’re certain your product is defective, and the product is covered by the terms of this warranty, you need to take the product back to the place you purchased it from, where the retailer will replace the product for you, exchange defective parts, repair the Product or refund at Dateline’s discretion. In this event, per the terms of this warranty you will need to present this portion of the warranty information and the purchase receipt as proof of purchase so please make sure you keep both these instructions and your receipt on hand for the duration of the warranty period.