

©2022 BabylissPro

Distributed by:

**Dateline Imports P/L**  
Professional Products Division  
Banksmeadow, NSW 2019  
Australia

Ph: 61 2 9666 3611  
[www.babylisspro.com.au](http://www.babylisspro.com.au)

**Dateline Imports NZ Ltd**  
66 Apollo Drive  
Albany, Auckland  
NZ 0632

Ph: 64 9 415 5415  
[www.babylisspro.co.nz](http://www.babylisspro.co.nz)

# BaBylissPRO<sup>®</sup>

## NANO TITANIUM™



For your safety and continued enjoyment  
of this product, always read the  
instruction book carefully before use.

**ROUND IONIC HOT AIR BRUSH**  
Model BNTHB150A (38mm)

## ROUND IONIC HOT AIR BRUSH (38MM)

### INSTRUCTIONS FOR USE

Use a hairdryer first to dry hair and remove the excess moisture.

Once the hair is 80% dry, you can start to create your style using the BaBylissPRO® Oval Ionic Hot Air Brush.

### SUPER STYLING GUIDE

Always treat hair right with superior quality shampoos, conditioners, and finishing products.

The BaBylissPRO Oval Ionic Hot Air Brush is an innovative, revolutionary hot air styler that has effectively eliminated the need for a hair brush or a dryer.

The BaBylissPRO Oval Ionic Hot Air Brush is perfect for adding gorgeous volume and shine to styles. The large barrel gives fullness and body as you style while the combination bristles create ultimate shine and smoothness.

### FEATURES:

- 1000 watts
- High shine—true ionic conditioning
- 38mm (1.5") barrel with tangle-free combination bristles
- 2 heat settings plus cool setting
- High-performance DC motor
- Easy-to-clean removable filter
- Professional power cord

### TRUE IONIC TECHNOLOGY

AMany aspects of modern living, including air conditioning, contact with man-made fibers, and air pollution contribute to a buildup of static electricity in the hair. Even brushing and towel-drying the hair can increase these levels, causing the surface of the

cuticle to become rough. Consequently, hair may have a dull appearance. Also, high levels of static charge cause hair to become flyaway and difficult to style. The ion generator produces a stream of negative ions that act to neutralize the static charge, smoothing the cuticle for shiny, smooth and manageable hair, so you can achieve your desired style easily.

### Nano Titanium™ Technology

Nano titanium™ is an exceptional conductor of heat and is stable in ultra-high temperatures. This technology uses microparticles of titanium that provide the ultimate heat performance for beautiful, healthy-looking hair.

### 3 SETTINGS

**Low Setting:** This position combines ideal airflow and temperature setting for shaping finer, damaged or treated hair.

**High Setting:** Combines ideal airflow with higher temperature, especially recommended for pre-drying and also for styling thick hair.

**Cool Setting:** Using the cool setting at the end sets the style for a long-lasting effect.

### Styling Tips for Maximum Volume and Body

1. Start by sectioning the hair. Be sure to comb through hair so it's detangled.
2. To turn the appliance on, select the correct heat setting based on hair type.
3. Position the appliance in the hair close to the roots, and brush through the section.
4. Move the brush through the hair

toward the ends, and as you reach the end of the section, start to rotate the brush away from the head.

5. As you do this, pull the brush downward. Tension created through the section of hair will help to smooth hair faster.

**IMPORTANT!** It may take several attempts to perfect this technique.

6. For added root lift, hold the brush in place at the roots for a few seconds.
7. For even more volume, rotate the brush, winding the entire section of hair around the barrel. Then leave the brush in the hair for a few seconds. Use cool style setting to set style.
8. To release the section, unwind the hair from the brush.
9. Repeat as necessary.
10. After use, switch off and unplug the appliance.
11. Allow to cool before storing away.

### Helpful Hints and Tips

- To define layers and give shape to styles, follow step 4 and repeat through all sections.
- To get root volume and body through the top section of hair, follow steps 3 to 6, but using an upward motion.
- You can create flips or tuck hair under. Also perfect for shaping bangs.


### IMPORTANT SAFETY INSTRUCTIONS

#### WARNING

- When using electrical appliances, especially when children are present, basic safety instructions should always be followed.
- Polythene bags over product or package may be dangerous. To avoid danger of suffocation, keep

this wrapper away from babies and children. This bag is not a toy.

### DANGER

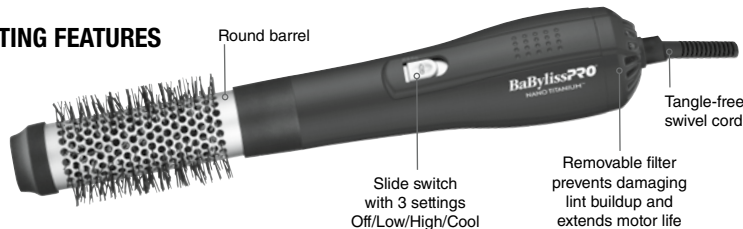
- Do not use this appliance in or near bathtubs, showers, basins or other vessels containing water. 
- Do not immerse the appliance in water or other liquids.
- When the hot air brush is used in a bathroom, unplug after use since the proximity of water presents a hazard even when the hot air brush is switched off.
- For additional protection, the installation of a residual current device (RCD) with a rated operating current not exceeding 30mA is advisable in the electrical current circuit supplying the bathroom. Ask your installer for advice.
- Do not reach for an appliance that has fallen into water. Unplug immediately.
- This appliance is not intended for use by persons (including children) with reduced physical, sensory or mental capabilities, or lack of experience and knowledge, unless they have been given supervision or instruction concerning use of the appliance by a person responsible for their safety.
- Children should be supervised to ensure they do not play with the appliance.

**CAUTION:** In order to avoid a hazard due to inadvertent resetting of the thermal cut-out, this appliance must not be supplied through an external switching device, such as a timer, or connected to a circuit that is regularly switched on and off by the utility.

## IMPORTANT!

- Always unplug the appliance when not in use or before cleaning. Do not leave unattended when plugged in or switched on. Do not place on any heat sensitive surface and always allow to cool before storing away.
- Use this appliance only for its intended use and as described in this instruction booklet.
- Take care to avoid contact between the hot surfaces of the unit and the skin, paying particular attention to the face, neck and hands.
- To prevent the risk of injury, never look directly into the airflow of the appliance when in use.
- Never drop the appliance or insert any object into an opening
- Never use while sleeping.
- Never block the air openings of the appliance or place on a soft surface such as a bed or couch, where the air openings may be blocked. Keep the air openings free of lint and other debris.
- Do not use outdoors or operate where aerosol (spray) products are being used or where oxygen is being administered.
- Keep the cord away from heated surfaces.

## OPERATING FEATURES



- Do not use an extension cord with this appliance.
- Do not use if the supply cord is damaged. In the event of damage, it must be replaced by the manufacturer, its service agent or similarly qualified persons in order to avoid a hazard.
- After use do not wrap the cord around the appliance as in time this may cause the cord to fracture. Coil cord loosely by the side of the appliance in storage.
- Always ensure that the voltage to be used corresponds to the voltage marked on the unit.

**CAUTION:** Take care not to direct the airflow directly onto the skin (e.g. scalp, neck, ears, face, etc.) as hot air from hot air brushes can, particularly if held too close, cause discomfort or even burns.

## STYLING ADVICE

- For best results, wash & condition your hair prior to styling.
- Section dry or damp hair evenly & comb through before styling. Always ensure hair is free from knots & tangles.
- For enhanced results, always apply a wet styling product or argan oil to the hair prior to styling.
- Style one section of hair at a time,

ensuring all sections are styled evenly.

- Start with the sections of hair underneath & work your way gradually to the top of the hair.
- Always work from the roots to the ends & allow the styler to glide slowly along the section of the hair.
- Once hair is dry & styled to your desired look, apply a finishing styling product such as mousse or hairspray to set & enhance the style.

## LOOKING AFTER YOUR NEW STYLING TOOL

- In order for your styling tool to retain its optimum performance & prevent overheating of the hot air brush, the rear filter should be cleaned on a regular basis. Follow these instructions to clean the rear filter:
  1. Ensure that the styling tool is switched off, unplugged from the power outlet & has cooled down.
  2. Holding the handle of the appliance firmly, take a soft brush & clean away any hair or other debris that may build up on the rear filter.
- To clean the unit, ensure it is completely cool & unplugged from the power outlet. Clean the unit with a damp cloth and wipe away any product, etc that may build up on the unit.
- Keep the power cord away from the hot surfaces of the product at all times.
- Before storing away, always allow the unit to cool down.
- To prevent cord damage, do not wrap the cord around the unit – always store the cord loosely next to it.

## TWO YEAR WARRANTY

The warranty may only be claimed where proof of original purchase is presented, i.e. original purchase receipt or invoice. We recommend attaching a copy of your purchase receipt to this instruction book and storing in a safe place.

To make a warranty claim you can return the defective product back to the place it was purchased where it will be replaced, exchanged or repaired (see point 12 in conditions).

Trade purchasers who have purchased from us directly should contact us directly with regard to warranty claims.

Please have the following details to hand:

1. Date of purchase
2. Details of where the product was purchased
3. Product Name/Model Number
4. Confirm you have your purchase receipt
5. Detail the problem with your product

**It is important to retain your proof of purchase. We recommend attaching your receipt to this page.**

For advice with regard to the warranty claim process please contact Customer Service:

### Dateline Imports P/L Professional Products Division

Banksmeadow, NSW 2019  
Australia

Ph: 61 2 9666 3611

[www.babylisspro.com.au](http://www.babylisspro.com.au)

### Dateline Imports NZ Ltd

66 Apollo Drive  
Albany, Auckland  
NZ 0632

Ph: 64 9 415 5415

[www.babylisspro.co.nz](http://www.babylisspro.co.nz)

## WARRANTY AGAINST DEFECTS

### A. AUSTRALIAN CONSUMER LAW

1. Our goods come with guarantees that cannot be excluded under the Australian Consumer Law. You are entitled to a replacement or refund for a major failure and compensation for any other reasonably foreseeable loss or damage. You are also entitled to have the goods repaired or replaced if the goods fail to be of acceptable quality and the failure does not amount to a major failure.
2. The guarantees under the Australian Consumer Law ("ACL") are provided in sections 51 to 59 inclusive of the ACL ("Statutory Guarantees") and the remedies are provided in sections 259 to 266 inclusive of the ACL ("Statutory Remedies").

In New Zealand our goods come with a guarantee that cannot be excluded under the Consumer Guarantee Act 1993.

### B. BaByliss PRO EXTENDED WARRANTY

1. In addition and subject to the Statutory Guarantees and Statutory Remedies, the following express warranty ("Warranty") commences from the date of purchase and continues for a period of 24 months ("Warranty Period") after which it expires. Subject to the conditions in Section C below, Dateline warrants to the original purchaser ("Purchaser") of the BaByliss PRO product that is the subject of this warranty ("Product") that if during the Warranty Period, the Product suffers from any defect caused by faults in materials or workmanship, Dateline will a) replace the Product, or b) exchange defective part in the Product or c) repair the Product,

as Dateline may choose in its discretion ("Warranty"). In this Warranty "Dateline" means Dateline Imports P/L (ABN 60 000 557 282) of Banksmeadow, NSW 2019, Australia.

2. To honour the Warranty, Dateline must replace, or exchange parts in, or repair, the Product, as Dateline determines, in accordance with paragraph B1 above, subject always to the conditions in Section C below.
3. If any of the conditions in Section C below are inconsistent with any provisions of the ACL or regulations made there under, those provisions of the ACL or regulations shall prevail to the extent of the inconsistency.

### C. CONDITIONS

1. The Product must be used in accordance with manufacturer's instructions. This Warranty does not apply should the defect in or failure of the Product be attributable to misuse, abuse, accident, act of God such as lightning, or nonobservance of manufacturer's instructions on the part of the user. This Warranty does not cover ordinary wear and tear in the Product or its parts.
2. Dateline does not accept liability for a) any loss or damage however suffered, caused by or arising out of any failure to use the Product in accordance with the manufacturer's instructions, and b) any indirect, consequential or economic loss or damage however caused.
3. This Warranty is immediately void if – a) any serial number or appliance plate is removed or defaced, b) the

Product has been serviced or otherwise repaired by a person not authorized to do so by Dateline or where non approved replacement parts are used.

4. The Product must be connected to the electrical voltage supply as specified in the ratings label located on the Product. This Warranty does not cover defects arising from incorrect voltage supply.
5. This Warranty may only be claimed against where proof of original purchase is presented, for example, original receipt or invoice.
6. Any parts of the Product that need to be replaced, or if the whole Product needs to be replaced, the replaced Product, become the property of Dateline. The Warranty on any replacement Product or parts will expire on the same date that the Warranty Period on the original Product expires.
7. The benefits provided by this Warranty are in addition to all other rights and remedies in respect of the Product which the Purchaser has under the ACL, and applicable laws in New Zealand, which rights and remedies by law may not be excluded. All other warranties and representations express and implied are hereby excluded.
8. The defect must have occurred during the Warranty Period and Purchaser bears the onus of proving that fact, and that the defect was not caused by any of the causes excluded from this Warranty.
9. This Warranty does not cover Products purchased from any person who is not a retailer serviced by Dateline's authorized distributors or purchased second hand.

10. The Purchaser is responsible for all postage and freight charges and any other expenses incidental to claiming against this Warranty.
11. The Warranty excludes consumable items (such as blades or brushes) and normal wear and tear.
12. If you're certain your product is defective, and the product is covered by the terms of this warranty, you need to take the product back to the place you purchased it from, where the retailer will replace the product for you, exchange defective parts, repair the Product or refund at Dateline's discretion. In this event, per the terms of this warranty you will need to present this portion of the warranty information and the purchase receipt as proof of purchase so please make sure you keep both these instructions and your receipt on hand for the duration of the warranty period.