

BaBylissPRO®

©2021 BaBylissPro

Distributed by:

Dateline Imports P/L
Professional Products Division
Banksmeadow, NSW 2019
Australia

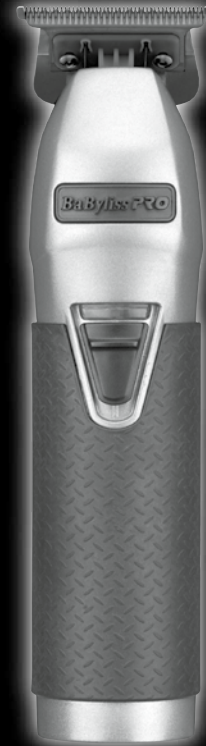
Ph: 61 2 9666 3611

www.babylisspro.com.au

Dateline Imports NZ Ltd
66 Apollo Drive
Albany, Auckland
NZ 0632

Ph: 64 9 415 5415

www.babylisspro.co.nz



Model
B787GIA
B787PIA
B787RIA

BaByliss4
BARBERS™

LIMITED EDITION EDM TECHNOLOGY
PROFESSIONAL CORD / CORDLESS
METAL LITHIUM OUTLINER TRIMMER
NEW DIAMOND TEXTURE RUBBER HANDLE

For your safety and continued enjoyment of this product,
always read the instruction book carefully before using.

EDM TECHNOLOGY PROFESSIONAL OUTLINER TRIMMER NEW DIAMOND TEXTURE RUBBER HANDLE

IMPORTANT SAFETY INSTRUCTIONS

When using electrical appliances, especially when children are present, basic safety precautions are required to always be followed, including the following:

READ ALL INSTRUCTIONS BEFORE USING KEEP AWAY FROM WATER

SAFETY CAUTIONS

- For the purposes of recharging the battery, only use the adapter provided with this appliance.
- This appliance is not intended for use by persons (including children) with reduced physical, sensory or mental capabilities, or lack of experience and knowledge, unless they have been given supervision or instruction concerning use of the appliance by a person responsible for their safety.
- Keep oil out of reach of children.
- Children should be supervised to ensure that they do not play with the appliance.
- The battery is not replaceable.
- This appliance contains batteries that are only replaceable by skilled persons.
- Do not immerse into water or other liquids. Do not use near basins or other vessels containing water.
- Store out of children's reach.
- If the supply cord is damaged, it must be replaced by a special cord or assembly available from the manufacturer or its service agent.



- Return the appliance to the nearest service facility for examination, electrical or mechanical adjustment or repair.
- Avoid skin contact with moving blade.
- Always ensure that the voltage to be used corresponds to the voltage marked on the unit.
- For additional protection, the installation of residual current device (RCD) with a rated operating current not exceeding 30ma is available in the electrical circuit supplying the bathroom. Ask your installer for advice.
- Do not use the appliance if it has been dropped or if it shows noticeable damage.
- Do not leave unattended when switched on and always allow to cool before storing away.
- Do not use any attachments other than those recommended by BabylissPRO.

Keep the appliance dry

OPERATING INSTRUCTIONS

1. **Before using the trimmer for the first time, charge continuously for 3 hours. Maximum battery capacity will only be reached after 3 charging and discharging cycles.**
2. Make sure the switch on the trimmer is in the "0" position.
3. Apply a drop of the provided lubricating oil across the blades; wipe off any excess oil with a dry cloth.
4. Connect the charging jack into the receptacle on the bottom of the trimmer. Plug the adapter into any electrical outlet (at the voltage listed on the label affixed to the adapter). The charging indicator will light up to indicate that the charging has begun. Charging is complete after 3 hours.

User will see LED light has stopped blinking and is now steady lit.

5. The adapter may become warm while charging. This is normal.
6. Preserving the batteries: In order to maintain the optimum capacity of the rechargeable batteries, the trimmer should be recharged for 3 hours approximately every 6 months.
7. Slide the switch to "I" position.
8. Make sure the switch is in the "0" position when the trimmer is not operating.
9. Remove hair trimmings and debris from the blades using the provided cleaning brush. Wipe the housing clean with a dry cloth.
10. Apply a few drops of lubricating oil to the blades, and wipe off any excess oil with a dry cloth. This last procedure is important for the proper maintenance of the blades.
11. If the charging light starts to flash rapidly (more than 4 flashes per second) then the appliance is faulty. If this happens then please stop charging and remove the adapter from the mains and contact an authorized Service Center.

FOR DIRECT PLUG-IN OPERATION

Make sure trimmer is off. Connect charging jack into the receptacle at the end of trimmer and plug the adapter into power outlet.

ON/OFF SWITCH

To operate, simply slide switch to ON (marked "I"). To stop operation, set to the OFF (marked "0") position.

IMPORTANT: Do not use the trimmer in this mode for more than 20 minutes.

Cleaning & Maintenance

To maintain correct performance, the blades must be regularly cleaned and oiled.

They are removable for easy cleaning.

- With the trimmer facing you, push the blade up and away from the trimmer to remove.
- Brush away the hair from the blades and the interior of the cutting head with the cleaning brush.
- It is recommended to oil the blades every time that the trimmer is used, using the oil provided. Never use any other product: this oil was formulated for high speed trimmers, it does not evaporate or slow down the blades.
- After cleaning click the blade frame back in place.

BATTERY REMOVAL

This trimmer contains lithium-ion batteries.

To help protect our environment, the lithium-ion batteries should be removed for safe disposal at the end of the trimmer's life.

Please take the appliance to a recycling center, where the internal rechargeable battery should be removed and recycled separately.



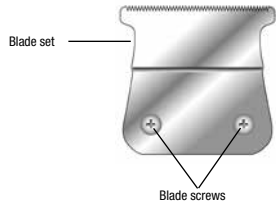
For more information about recycling of electrical and battery operated appliance, please contact your local office or your household waste disposal service.

VERY IMPORTANT: Blades must be cleaned and oiled on a regular basis for proper functioning. Failure to regularly clean and oil the blades will void the warranty.

REPLACING (REMOVING) BLADE SET

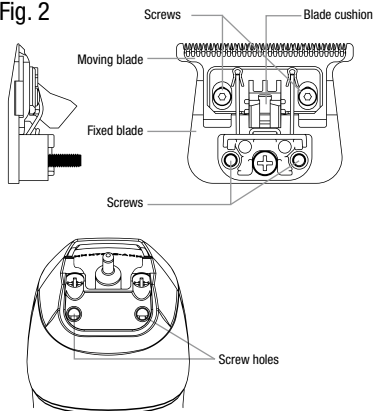
To remove the B787GA blade set, turn the trimmer to the OFF position and unplug it from the electrical outlet. Turn the trimmer upside down so that the teeth of the trimmer are facing down. Place the trimmer on a flat surface and using the screwdriver, loosen the fastening screws from the blade set. Remove the blade set from the trimmer (see Fig. 1).

Fig. 1



To install or replace your trimmer blade set, reverse the procedure, aligning the blade cushion shaft into the moving blade cushion (see Fig. 2). With the blade held in place, replace blade screws and tighten loosely. Turn the trimmer over and align the blade set parallel to the trimmer's upper housing.

Fig. 2



BLADE CARE

Because the trimmer blades are precision-made for a very special use, they should always be handled with care and cleaned regularly to ensure maximum performance. Each time you finish using the trimmer, take the cleaning brush provided and brush away any loose hair that has collected in the blades. Use a clean cloth to dry the attachment, reattach and then store the trimmer to protect the blades until the next use.

Any other servicing should be performed by an authorized service representative, since the appliance has no other user-serviceable parts. This product is for commercial use.

DO NOT RINSE BLADE OR TRIMMER HANDLE OR ADAPTER.

ZERO GAP ADJUSTMENT TOOL

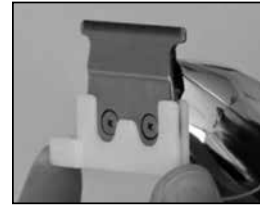
IMPORTANT! Only ever attempt to zero gap the blades using the adjustment tool, following the instructions very precisely.

The adjustment tool is required to adjust the blades to zero gap, to achieve a closer, more precise cut.

Step 1 – Using the screwdriver included, gently loosen the two small screws on each side of the blade.



Step 2 – Slide the zero gap tool over the gold fixed blade until it is tight against the back portion of the moving cutting blade.

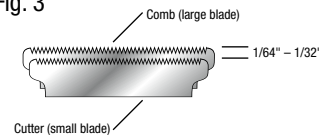


Step 3 – Using your fingers on each side of the zero gap tool, push up until the black cutting blade is even with "or" slightly below the gold fixed blade.



Be sure that the blades are aligned properly. The teeth of the smaller blade (cutter) should rest slightly below the upper edge of the larger blade (comb) approximately 1/64" to 1/32" apart (see Fig. 3). If the blades are not correctly aligned, they may cut or scratch your skin when trimming. Once the blades have been aligned, tighten the screws firmly.

Fig. 3



Step 4 – MAKE SURE THE MOVING CUTTING BLADE DOES NOT EXTEND PAST THE FIXED GOLD BLADE. **WARNING: IF THE CUTTING BLADE EXTENDS PAST THE FIXED BLADE YOU CAN POTENTIALLY CUT A CLIENT.**



Step 5 – Once the blade is adjusted to zero gap or your liking, gently tighten the two screws on each side of the blade while holding the zero gap tool in place. If the blade is not adjusted to satisfaction after testing, repeat the adjusting process.





Cleaning brush



Blade guard



Lubricating oil



Screwdriver



Zero gap tool

B787GIA , B787PIA & B787RIA

PRODUCT FEATURES

1. Zero Gap T-Blade
2. Brushless Motor - 7200 rpm
3. Power adapter
Model No.: C045100-AU
Input: 100-240V ~ 50/60Hz 0.2A
Output: 4.5V DC 1.0A
4. LED charge indicator light
 - a. LED BLUE Blinking - Charging
 - b. LED BLUE - Fully Charged
 - c. LED BLUE Flashing - 10 minutes battery left
5. Discharge time: 120 minutes

Before using the Class 2 Power supply, read these instructions carefully. This trimmer should only be used with the supplied adapter.

Use only with adapter Model No.: C045100-AU which is provided.

Rated input voltage: 100-240V ~, 50/60Hz 0.2A

Rated Output: 4.5V DC 1.0A

OPERATION

1. For dry location use only. Do not expose to water.
2. When not in use, unplug unit completely.
3. Unit will become warm during operation.

CAUTION

1. Dry location use only. Do not expose to liquids, vapor, or rain.
2. Ensure jack is plugged into the clipper unit before plugging the adapter into the outlet.
3. Do not operate any appliance that has a damaged output cord or housing.
4. Always unplug the unit before cleaning or when not in use.
5. Be sure voltage is correct before plugging in. For connection to power supply not in Australia, use an attachment plug adapter of the proper configuration for power outlet. The included adapter automatically adjusts to the input voltage. **DO NOT USE A VOLTAGE CONVERTER.**

TRIMMER CHARGING PRECAUTIONS

- Avoid charging the batteries at temperatures below 5°C or above 35°C.
- Avoid charging the batteries in direct sunlight or near a radiating heat source.
- Even though the trimmer may not be used for an extended period, charge once a month to preserve battery life.
- The power cord cannot be replaced. If it is damaged, the AC adapter should be discarded.

TRIMMER OPERATING PRECAUTIONS

- This trimmer has a built-in rechargeable battery. Do not throw into fire, apply heat, or charge, use, or leave in a high-temperature environment.

TWO YEAR WARRANTY

The warranty may only be claimed where proof of original purchase is presented, i.e. original purchase receipt or invoice. We recommend attaching a copy of your purchase receipt to this instruction book and storing in a safe place.

To make a warranty claim you can return the defective product back to the place it was purchased where it will be replaced, exchanged or repaired (see point 12 in conditions).

Trade purchasers who have purchased from us directly should contact us directly with regard to warranty claims.

Please have the following details to hand:

1. Date of purchase
2. Details of where the product was purchased
3. Product Name/Model Number
4. Confirm you have your purchase receipt
5. Detail the problem with your product

It is important to retain your proof of purchase. We recommend attaching your receipt to this page.

For advice with regard to the warranty claim process please contact Customer Services:

Dateline Imports P/L Professional Products Division

Banksmeadow, NSW 2019

Australia

Ph: 61 2 9666 3611

www.babylisspro.com.au

Dateline Imports NZ Ltd

66 Apollo Drive

Albany, Auckland

NZ 0632

Ph: 64 9 415 5415

www.babylisspro.co.nz

WARRANTY AGAINST DEFECTS

A. AUSTRALIAN CONSUMER LAW

1. Our goods come with guarantees that cannot be excluded under the Australian Consumer Law. You are entitled to a replacement or refund for a major failure and compensation for any other reasonably foreseeable loss or damage. You are also entitled to have the goods repaired or replaced if the goods fail to be of acceptable quality and the failure does not amount to a major failure.
2. The guarantees under the Australian Consumer Law ("ACL") are provided in sections 51 to 59 inclusive of the ACL ("Statutory Guarantees") and the remedies are provided in sections 259 to 266 inclusive of the ACL ("Statutory Remedies").

In New Zealand our goods come with a guarantee that cannot be excluded under the Consumer Guarantee Act 1993.

B. BabylissPRO EXTENDED WARRANTY

1. In addition and subject to the Statutory Guarantees and Statutory Remedies, the following express warranty ("Warranty") commences from the date of purchase and continues for a period of 24 months ("Warranty Period") after which it expires. Subject to the conditions in Section C below, Dateline warrants to the original purchaser ("Purchaser") of the BabylissPRO product that is the subject of this warranty ("Product") that if during the Warranty Period, the Product suffers from any defect caused by faults in materials or workmanship, Dateline will a) replace the Product, or b) exchange defective part in the Product or c) repair the Product, as Dateline may choose in its discretion

("Warranty"). In this Warranty "Dateline" means Dateline Imports P/L (ABN 60 000 557 282) of Banksmeadow, NSW 2019, Australia.

2. To honour the Warranty, Dateline must replace, or exchange parts in, or repair, the Product, as Dateline determines, in accordance with paragraph B1 above, subject always to the conditions in Section C below.
3. If any of the conditions in Section C below are inconsistent with any provisions of the ACL or regulations made there under, those provisions of the ACL or regulations shall prevail to the extent of the inconsistency.

C. CONDITIONS

1. The Product must be used in accordance with manufacturer's instructions. This Warranty does not apply should the defect in or failure of the Product be attributable to misuse, abuse, accident, act of God such as lightning, or nonobservance of manufacturer's instructions on the part of the user. This Warranty does not cover ordinary wear and tear in the Product or its parts.
2. Dateline does not accept liability for a) any loss or damage however suffered, caused by or arising out of any failure to use the Product in accordance with the manufacturer's instructions, and b) any indirect, consequential or economic loss or damage however caused.
3. This Warranty is immediately void if – a) any serial number or appliance plate is removed or defaced, b) the Product has been serviced or otherwise repaired by a person not authorized to do so

by Dateline or where non approved replacement parts are used.

4. The Product must be connected to the electrical voltage supply as specified in the ratings label located on the Product. This Warranty does not cover defects arising from incorrect voltage supply.
5. This Warranty may only be claimed against where proof of original purchase is presented, for example, original receipt or invoice.
6. Any parts of the Product that need to be replaced, or if the whole Product needs to be replaced, the replaced Product, become the property of Dateline. The Warranty on any replacement Product or parts will expire on the same date that the Warranty Period on the original Product expires.
7. The benefits provided by this Warranty are in addition to all other rights and remedies in respect of the Product which the Purchaser has under the ACL, and applicable laws in New Zealand, which rights and remedies by law may not be excluded. All other warranties and representations express and implied are hereby excluded.
8. The defect must have occurred during the Warranty Period and Purchaser bears the onus of proving that fact, and that the defect was not caused by any of the causes excluded from this Warranty.
9. This Warranty does not cover Products purchased from any person who is not a retailer serviced by Dateline Imports P/L or purchased second hand.
10. The Purchaser is responsible for all postage and freight charges and any other expenses incidental to claiming against this Warranty.

11. The Warranty excludes consumable items (such as blades or brushes) and normal wear and tear.
12. If you're certain your product is defective, and the product is covered by the terms of this warranty, you need to take the product back to the place you purchased it from, where the retailer will replace the product for you, exchange defective parts, repair the Product or refund at Dateline's discretion. In this event, per the terms of this warranty you will need to present this portion of the warranty information and the purchase receipt as proof of purchase so please make sure you keep both these instructions and your receipt on hand for the duration of the warranty period.